

EXPLORE

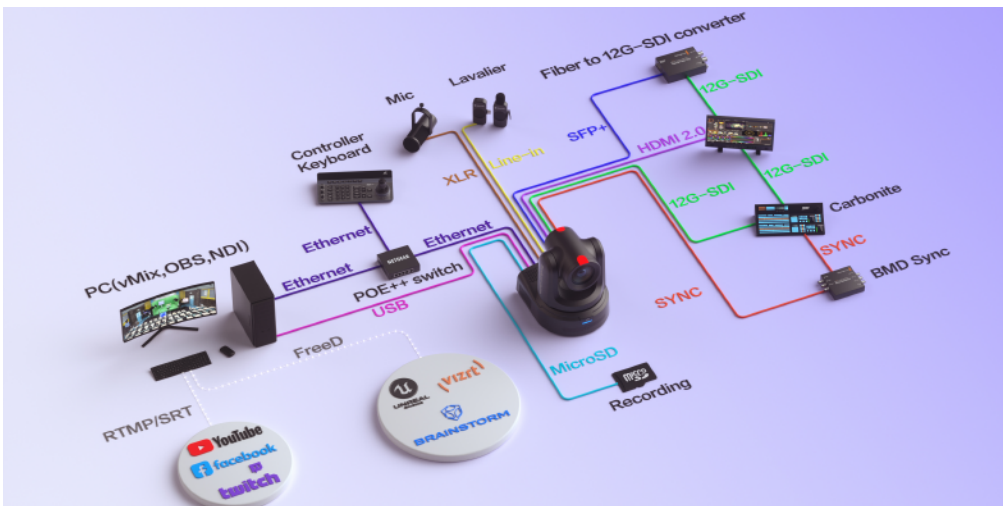
1-Inch Sensor PTZ Camera for Broadcasters



Broadcast Level PTZ Camera Disrupts AV Industry

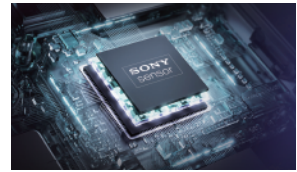
20X | 4K | AUTO-TRACKING
FREED | GENLOCK | PDAF

SFP+/12G-SDI/HDMI/NDI®/NDI®HX3/XLR



High-Performance Sensor and Image Processor

Explore's Sony 1-inch CMOS sensor delivers broadcast-grade imaging. Engineered for low-light excellence, it captures vivid detail with minimal noise while achieving cinematic depth of field. Enhanced light sensitivity ensures razor-sharp subject focus with artful background blur - the ultimate choice for professional production.



PDAF (Phase Detection Auto Focus)

Experience seamless and precise focusing with our PTZ camera's advanced AI Auto Focus. Whether for live events or VR production, Telycam's PDAF auto-focus empowers you with fast and accurate focus for premium-quality footage.



Versatile Output Options with Robust Audio Capabilities

The Explore offers diverse output options including 4K60p through NDI®, NDI®HX3, 12G-SDI, HDMI, and SFP+, along with 3.5mm line-in and Mini XLR with Phantom power for compatibility with various microphones and audio equipment, ensuring great flexibility and compatibility for Telycam users.



Genlock Functionality

The Explore features Genlock for better synchronization. This allows it to function as the main camera, ensuring precise video synchronization with sub-cameras in broadcasting and live streaming setups.



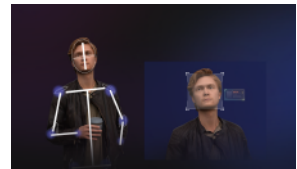
Built-in ND Filters for Light Management

Explore features a built-in variable ND filter adjustable to 1.6%, 6.3%, 25%, and 100%, with the option to attach custom ND filters for precise lighting control.



Native AI-Based Auto-Tracking

The Explore features AI-based auto-tracking, automatically following subjects to enhance ease of use and capture the moments flawlessly.



FreeD Technology Integration

The Explore integrates FreeD technology for versatile shooting angles, ideal for both real-world and virtual applications.



MicroSD Card Slots

The Explore features two MicroSD card slots – one for firmware upgrades and the other for local recording. Record directly onto the camera for instant backup during network issues or quick access, ideal for prompt event review.



Specifications

Camera	Explore
Part Number	TLC-900-IP-20-4K(NDI)-AB
Sensor	1 inch, 9MP UHD CMOS sensor
Zoom	20X optical zoom
Lens	f=9.79~186.5mm, F2.8~F4.5
Horizontal View Angle	71°(Wide)~4.05°(Tele)
Vertical Viewing Angle	39.6°~2.2°
Diagonal Viewing Angle	78.5°~4.6°
Minimum Working Distance	Wide: 15cm; Tele: 150cm
S/N Ratio	≥50dB
Video Format	12G-SDI: 3840*2160P60/50/30/25/59.94/29.97/24/23.98; 1920*1080P60/50/30/25/59.94/29.97/24/23.98; 1920*1080I60/50/59.94; 1280*720P60/50/30/25/59.94/29.97
	3G-SDI: 1920*1080P60/59.94/50/30/29.97/25/24/23.98; 1920*1080I60/59.94/50; 1280*720P60/59.94/50/30/29.97/25
	HDMI2.0: 3840*2160P60/50/30/25/59.94/29.97/24/23.98; 1920*1080P60/50/30/25/59.94/29.97/24/23.98; 1920*1080I60/50/59.94; 1280*720P60/50/30/25/59.94/29.97
	NDI® / NDI®HX3: Main Stream: 3840*2160P15~60; 1920*1080P15~60; 1280*720P15~60; 1024*576P15~60; Sub Stream: 640*360P15~30
	SFP+: 3840*2160P60/50/30/25/59.94/29.97/24/23.98; 1920*1080P60/50/30/25/59.94/29.97/24/23.98; 1920*1080I60/50/59.94; 1280*720P60/50/30/25/59.94/29.97
	USB Type-C: NV12: 1920*1080P5; 1280*720P15; 1024*576P25; 800*448P30 YUYV: 1920*1080P5; 1280*720P15; 1024*576P25; 800*448P30 MJPG: 3840*2160P30; 1920*1080P60; 1280*720P60; 1024*576P60; 800*448P60 H264/H265: 3840*2160P30; 1920*1080P60; 1280*720P60; 1024*576P60; 800*448P60

Image Parameters

Noise Reduction	2D&3D
Minimum lux	0.5 lux(50 IRE Max AGC, 1/30, F1.8)
White Balance	Auto/Manual/ATW/Push/Indoor/Outdoor/Color Temperature
Exposure	Auto/Manual/Shutter Priority/Iris Priority/Brightness Priority
Anti-Flicker	OFF, 50Hz, 60Hz
Image Flip/Mirroring	Supported
Focus/Iris/Electronic-shutter	Auto/Manual
Gamma	Supported
Backlight Compensation	Supported

IP Streaming

Video Encoding	H.264/H.265
Bitrate Control	Variable bitrate(VBR), Constant bitrate(CBR)
Bitrate Range	1024Kbps~122800Kbps
Network Port Speed	1000M
Protocol	NDI®, NDI®HX3, SRT, HTTP, HTTPS, RTSP, RTMP, RTMPS, ONVIF, VISCA over IP(TCP&UDP), VISCA, PELCO P/D, SSDP, FreeD, NTP, RTP Multicast, WebRTC, MPEG-TS

Pan/Tilt Movement

Preset	Remote controller: 10; Serial port: 256; Accuracy: 0.1°
Pan Rotation Angle	-176°~+176°
Tilt Rotation Angle	-90°~+90°
Pan Rotation Speed	0.1°~80°/s
Tilt Rotation Speed	0.1°~60°/s

I/O Interface

Control Port	RS232, RS485, RS422, RJ45, USB, NDI®HX3
Video Port	NDI®, NDI®HX3, HDMI 2.0, 12G-SDI, 3G-SDI, SFP+, USB Type-C
Audio Port	Mini XLR(with phantom power), stereo 3.5mm line in
Tally	Supported
POE++	Supported
Daisy Chain	Supported

General

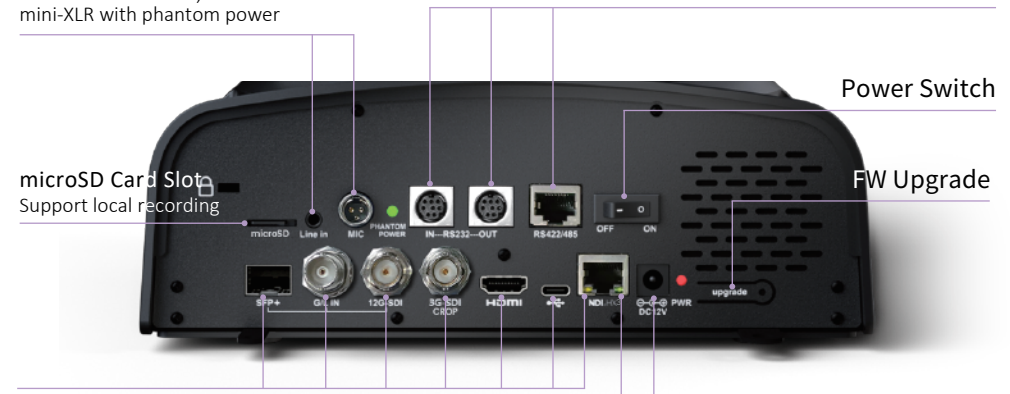
Input Voltage	DC12V, POE++(IEEE802.3bt)
Operating Temperature	-10℃~50℃
Operating Humidity	≤80%
Dimension (L×W×H)	232.5 mm×264mm×269mm
Net Weight	4.6kg(10.15LBS)
Color	Black/White

Audio Input

3.5mm stereo line in,
mini-XLR with phantom power

Remote control port

RS232, RS422, RS485



Video Output

SFP+, G/L IN, 12G-SDI, 3G-SDI CROP, HDMI, USB Type-C,
NDI®, NDI®HX3

Power Supply

POE++, DC12V